

We are authorised resellers of top renowned brands



LISER TRADING  
GROUP



# HOSPITAL Furniture



Liser South Africa



Liser Mozambique



**BDHT111G**  
HI-LO BED, 2 SECTION GAS ASSISTED BACKREST, WITH FORWARD & REVERSE TRENDLENBURG TILTS.



**BDHT111G**  
HI-LO BED, 4 SECTION GAS ASSISTED BACKREST, WITH FORWARD & REVERSE



**BDC111M**  
3 SECTION FIXED HEIGHT BED, WITH MANUAL FOWLER POSITIONS.



**BD120**  
STANDARD HOSPITAL BED, WITH MANUAL BACKREST ON 2 LOCKING CASTORS, 1980 X 915mm



**BD175B**  
OLD AGED HOME BED, MELAMINE OAK PANNEL HEAD & FOOT ENDS ON CASTORS, 1980 X 915mm



**BD042**  
STANDARD HOSPITAL BED ON 2 LOCKING CASTORS, LOCKING CASTORS, 1980 X 915mm



**BD052**  
ADULT COT BED WITH DROP DOWN COTSIDES, ON 2 LOCKING CASTORS, 1980 X 915mm



**BD072**  
CHILDREN COT BED WITH DROP DOWN COTSIDES, ON 2 LOCKING CASTORS, 1370 X 760m



**BD025**  
JUVENILE COT BED, FIXED COTSIDES, ON RUBBER FEET.







**Bd112**  
OBSTETRIC / DELIVERY BED  
(NONE TILTING) WITH  
LITHOTOMY POLES &  
MATTRESS.



**Bd160**  
RECOVERY BED / TROLLEY  
WITH FORWARD & REVERSE  
TRENDELLENBURG TILT,  
ADJUSTABLE BACKREST,  
CHROME PLATED COTSIDES.



**Tt860**  
PATIENT TROLLEY, S/S TOP,  
OXYGEN CAGE HOLDER, DRIP ROD,  
BLANKET TRAY & MATTRESS ON  
2 LOCKING CASTORS.



**Tt860**  
PATIENT TROLLEY, S/S TOP,  
OXYGEN CAGE HOLDER, DRIP ROD,  
BLANKET TRAY & MATTRESS ON  
2 LOCKING CASTORS.



**Bd881**  
GYNAE COUCH 3 SECTIONS  
WITH LITHOTOMY POLES  
AND STRAPS.



**Bd880**  
EXAMINATION COUCH  
ADJUSTABLE BACKREST.



**BD882F**  
PORTABLE EXAMINATION  
COUCH. 3 SECTION FOLDING.



**Bd091**  
CHROME PLATED  
TELESCOPIC COTSIDES  
WITH BED BRACKETS  
AND SWIVEL CLAMPS



**Bd801**  
DOUBLE STEP, WITH WOODEN  
NON SLIP RUBBER TOP.



**Bd800**  
SINGLE STEP WITH  
WOODEN, NON-SLIP RUBBER TOP.



**Gr1002**  
GERIATRIC CHAIR, LOW BACK.



**Gr1005**  
GERIATRIC CHAIR  
HIGH BACK



**Bd220**  
OVERBED / CARDIAC TABLE  
EPOXY COATED FRAME & TOP.



**Bd224**  
OVERBED TABLE HI-LO, WITH  
MELAMINE OAK TOP/



**St780**  
OPERATION STOOL, M/S FRAME  
WITH ALUM TOP.



**Bd190 / BD191 / BD194**  
MOBILE BASSINETTE WITH  
BLANKET TRAY, CRIB & MATT.



**SI764**  
SOILED LINEN RECEIVER WITH  
CANVAS BAG. 610mm DIAMETER.



**SI770**  
SOILED LINEN RECEIVED WITH  
3 SHELVES AND BAG.



**Bd743 / BD744 / BD745**  
BEDSIDE SCREEN AND CURTAINS.



**SI751 / SL752**  
CLINI BIN, WITH BIN & LID.



**SI751**  
SOILED LINEN RECBOX TYPE.







**Lr261**  
**UTILITY DRUG CABINET**  
**SLOPPING FRONT WITH DOUBLE**  
**LOCKABLE DOORS & PULL OUT**  
**WRITING SHELVES MOUNTED ON**  
**100mm SWIVEL CASTORS.**



**Lr262**  
**EMERGENCY UTILITY DRUG**  
**CABINET, WITH CLEAR ACRYLIC**  
**DOORS & 2 SIDE DRAWERS**  
**MOUNTED ON 100mm SWIVEL AND**  
**BRAKE CASTORS.**



**Lr263**  
**ANAESTHETIC TROLLEY 6**  
**DRAWERS & 3 OPEN SIDE**  
**SHELVES WITH STAINLESS STEEL**  
**TOP, MOUNTED ON 125mm SWIVEL**  
**AND BRAKE CASTORS.**



**Lr300**  
**BEDSIDE MISSION LOCKER WITH**  
**EPOXY COATED TOP ON RUBBER**  
**FEET.**



**Lr301**  
**BEDSIDE MISSION LOCKER**  
**WITH STAINLESS STEEL TOP**  
**ON RUBBER FEET.**



**Lr440**  
**URINE TEST CABINET**  
**WITH SINGLE DRAWER MOUNTED**  
**ON 75mm SWIVEL CASTORS.**



**Lr281 / LR282**  
**BEDSIDE LOCKER DRAWER**  
**AND CUPBOARD WITH TOWEL**  
**RAIL ON CASTORS.**



**Lr291**  
**BEDSIDE LOCKER, DRAWER**  
**AND CUPBOARD ON CASTORS.**



**Lr266**  
**EMERGENCY TROLLEY, 5 DRAWERS**  
**LOCKABLE WITH S/S TOP,**  
**OXYGEN CYLINDER CAGE AND**  
**DRIP ROD, ON CASTORS.**



**LR26B**  
**EMERGENCY CABINET**  
**SUITCASE ON CASTORS.**



**Tr551**  
**SINGLE DRAWER ANAESTHETIC**  
**TROLLEY WITH STAINLESS STEEL**  
**TOP, ON 75mm SWIVEL CASTORS.**



**Lr451 / LR452**  
**POISON CABINET LOCKABLE**



**Tr541**  
**DOUBLE DRAWER ANAESTHETIC**  
**TROLLEY WITH STAINLESS STEEL**  
**ON CASTORS.**



**Lr453**  
**DEADLY DANGEROUS DRUG**  
**CABINET WITH INNER CABINET.**



**Tr543**  
**3 DRAWER EMERGENCY**  
**TROLLEY S/STEEL TOP, OXYGEN**  
**CYLINDER CAGE & DRIPROD ON**  
**75mm SWIVEL CASTORS.**



**St691**  
**OXYGEN CYLINDER CARRIER**  
**LEANING TYPE ON 4 WHEELS.**



**St690**  
**OXYGEN CYLINDER CARRIER**



**St700**  
**OXYGEN CYLINDER**  
**STAND - UPRIGHT.**







**Cm480 / CM481**  
**STANDARD COMMODE WITH TOILET SEAT AND BASIN.**



**S1330**  
**DOUBLE BOWL STAND, EPOXY COATED FRAME ON 75mm SWIVEL CASTORS.**



**M1870**  
**MORTUARY TROLLEY EPOXY COATED FRAME WITH STAINLESS STEEL TOP COMPLETE TENT FRAME.**



**Tr531**  
**DRESSING TROLLEY SMALL EPOXY COATED FRAME WITH STAINLESS STEEL SHELVES 458mm X 458mm.**



**Tr582**  
**INSTRUMENT TROLLEY MEDIUM EPOXY COATED FRAME WITH STAINLESS STEEL SHELVES. 610mm X 458mm**



**Tr533**  
**DRESSING TROLLEY LARGE EPOXY COATED FRAME WITH STAINLESS STEEL SHELVES. 915mm X 458mm**



**Tr571**  
**DRESSING TROLLEY LARGE EPOXY COATED FRAME WITH STAINLESS STEEL SHELVES WITH BUCKET & BOWL RING HOLDER.**



**Tr535**  
**DRESSING TROLLEY MEDIUM STAINLESS STEEL FRAME & SHELVES. 610mm X 458mm.**



**Tr610**  
**FOOD TROLLEY 2 TIER SHELVES ON CASTORS.**





**Tr620**  
**MAYO TABLE EPOXY COATED**  
**FRAME WITH STAINLESS**  
**STEEL TRAY.**



**St350**  
**KICKABOUT BUCKET TYPE**  
**EPOXY COATED FRAME**  
**MOUNTED ON 50mm**



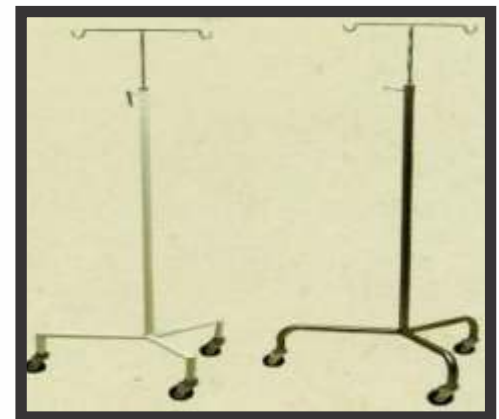
**St686**  
**MOBILE LAMP STAND**



**Bd260**  
**BACKREST FOLDING WIRE**  
**MESH TYPE.**



**St380**  
**MOBILE BEDPAN & URINAL**  
**STAND, STAINLESS STEEL**  
**FRAME FOR 6/6 MOUNTED ON**  
**50mm SWIVEL CASTORS.**



**St681**  
**MOBILE DRIPSTAND EPOXY**  
**COATED FRAME WITH DRIP**  
**ROD ON 3 LEG BASE FRAME.**



**Bd790 / BD791 / BD792**  
**BEDSIDE STOOLS.**



**Wc662**  
**PATIENT TRANSPORTER**

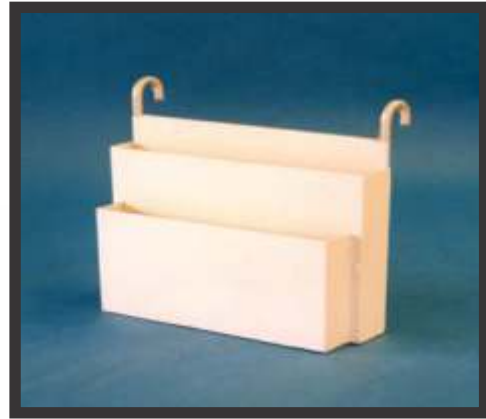


**RICK STACKER CHAIRS.**





**Wc660**  
**STANDARD FOLDING WHEELCHAIR**



**Bd512**  
**CHARTBOARD & XRAY HOLDER.**



**St350 / ST361**  
**BUCKET AND BOWL KICKABOUT.**



**X RAY VIEWING BOX**



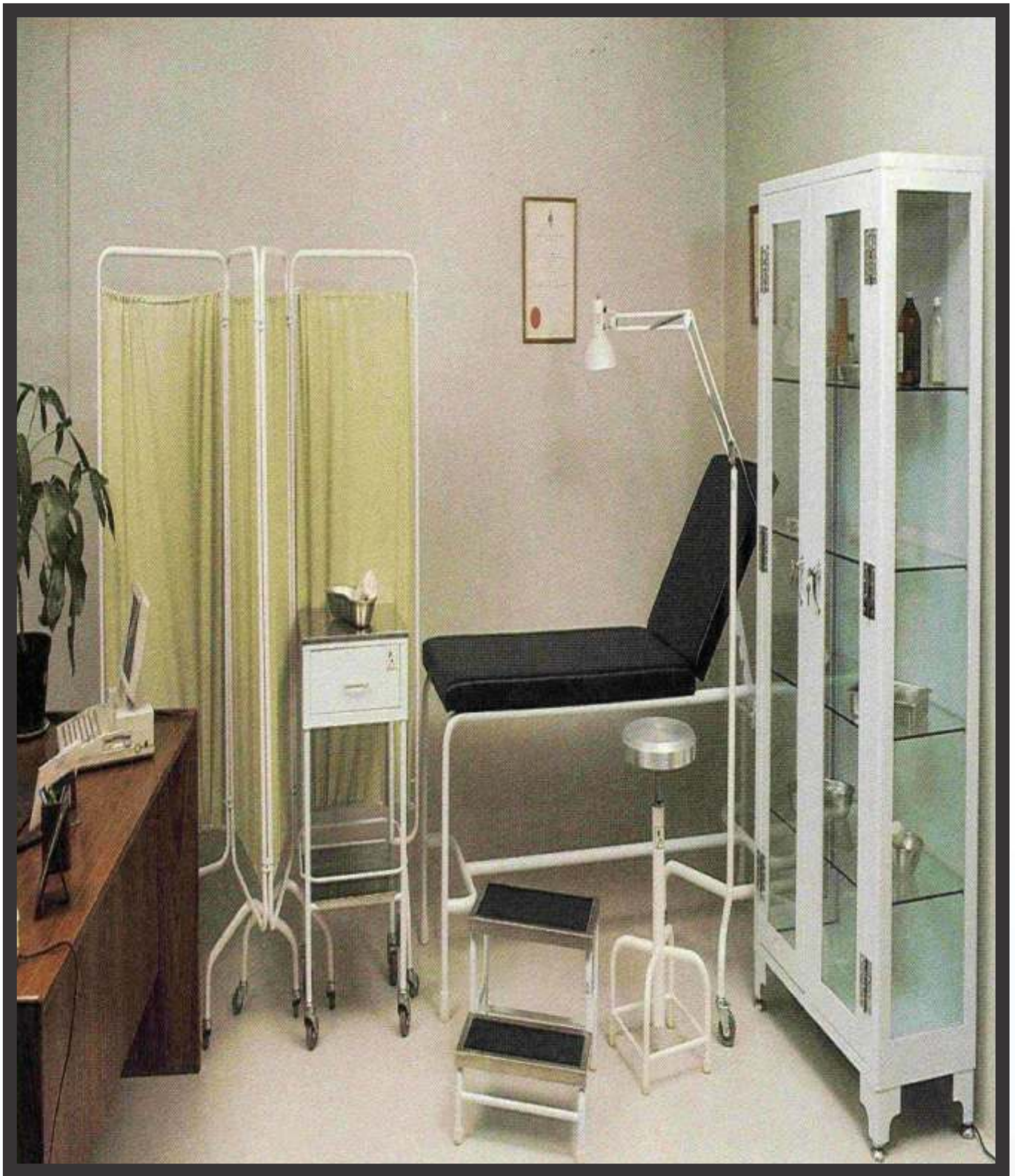
**St340 / ST330**  
**SINGLE AND DOUBLE**  
**BOW STANDS.**



## CLINIC SET UP







# DOCTORS SET UP





## CLINIC SET UP





We are authorised resellers of top renowned brands



Liser South Africa



Liser Mozambique



LISER TRADING  
GROUP